



NEO is small. Very small. But it takes no prisoners.

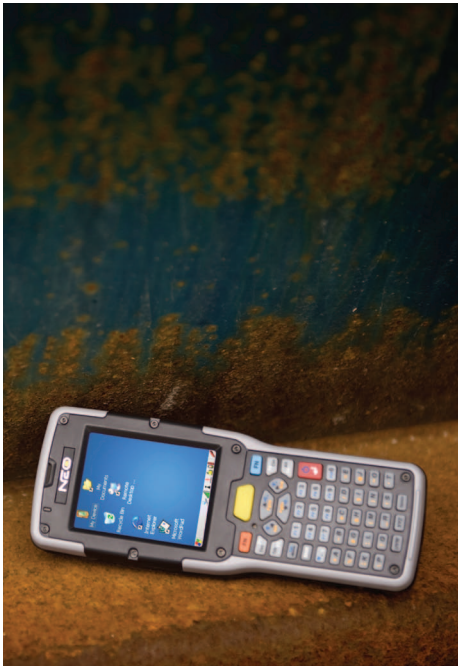
Retail. Postal and Courier. Warehousing and Distribution.  
Supply chain. Arenas and sports venues.

NEO plays a key role in them all, every day. And they love it.

Is NEO the most compact, intelligent, rugged handheld  
computer around? Quite possibly...

# NEO

Power To Your Pocket



## Pocket Dynamo

You need smaller, lighter data collection tools. But you won't compromise on power or functionality. Now you don't have to.

NEO proves that exceptionally good things come in small packages. Its compact size (it weighs just over 275 g) coupled with a raft of features makes it perfect for the mobile workforce.

The pocket dynamo is setting industry alight. Stock checking. Inventory tracking. Light warehouse duty or full-on, in-store retail. NEO takes them all on. You want some?



## Features & Benefits

### It Doesn't Mess Around

NEO may be small but don't be fooled. It's unbelievably rugged. Which means it's never out of action. And productivity never dips.

This lean machine can withstand being dropped from 1.2 meters to polished concrete. Twenty-six times over (it could take more). It packs an IP rating of 54, so you don't have to worry about dust or moisture. And it can operate in extreme conditions: from -10°C to +50°C (14°F to 122°F).

Plus, a ten-hour battery life means it lasts the whole shift.

### Striking Ergonomics

We always put the worker at the heart of our design. That's why NEO just feels right. It's bright, high-resolution colour display is angled towards the user. This makes it a dream to use - unlike the frustrating 'scan, tilt and squint' action of other devices.

And just feel the weight. Or lack of it. The stylish NEO tips the scales at under 10oz.

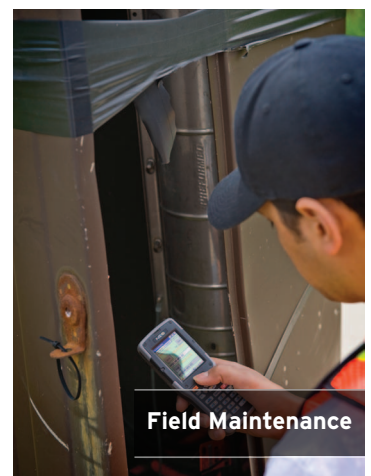
### We Can't Stop Cramming

You wanted it, so we've given it to you. NEO is Windows®-based and integrates with loads of advanced data capture and communications functions. WLAN and Bluetooth® connectivity - check. VoIP, IM and texting functionality, so you're never out of touch - that's here too.

And there's no need to fear the future. NEO can easily be expanded to incorporate new technologies, like RFID, as and when your apps demand it.

### Choices, Choices

Different apps have different requirements. NEO supports them all - it's available with 48-key alphanumeric or 26-key numeric keyboards.



# NEO

## Accessories



### Quad Unit Docking Station

Supports the simultaneous charging of four units and provides Ethernet connectivity to each device.



### Base Unit Desktop Dock with Modem Option

Simultaneously charge main unit and spare battery. Includes a Micro USB Connection for data transfer. The optional integrated analog modem allows data connections over a PSTN line and is designed to offer a cost-effective solution for wide-area data exchange, without the need for always-on connectivity.



### Pistol Grip

Quick, simple pistol grip installation or removal requires no screws or tools. Clip it on for inventory checking and remove it for price checking.



### Belt Kit

Get quick, ergonomic device access with this quick release, quick insertion belt clip. This is the ideal accessory to compliment speech/voice-directed operations.



### High Frequency (HF) RFID Back Pack

Perfect for ticketing and asset tracking applications, the HF RFID Back Pack simply mounts to the backside of NEO for integrated HF RFID reading capabilities. The HF Multi ISO Reader Module supports a broad range of tags, has 2 SAM slots for data encryption, and is CE, FCC and IC certified.

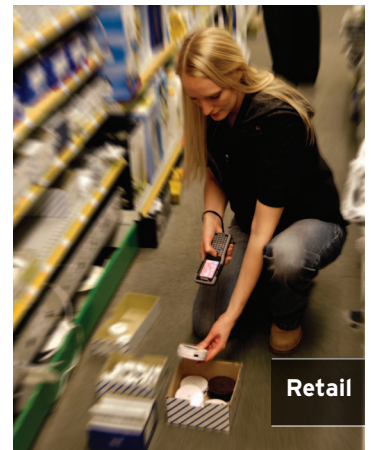


### Adapters to USB & Power or RS232

These adapters connect NEO to USB or RS232 serial while on the move. The power-in jack of the PX3054 can be used in conjunction with the AC/DC wall adapter or the 12-24V cigarette lighter adapter.



Postal and Courier



Retail



Warehouse



Meter Reading

# NEO

## Specifications



### Platform

- Marvell® PXA270 Processor
- 624 MHz
- 128 MB SDRAM
- 128 MB Flash ROM



### Wireless Communications

- On-board IEEE 802.11b/g (CCX V4 Certified)
- On-board Bluetooth® 2.0 + EDR radio (10 m range)
- High Frequency RFID Back Pack

### Operating System

- Windows® CE 5.0 Core
- Windows® CE 5.0 Professional
- Windows Mobile® 6.1

### Application Software\*

- Internet Explorer® 6 for CE
  - Wordpad
  - Active Sync
  - Open TekTerm
  - ANSI
  - TESS terminal emulations
  - IBM 3270, IBM 5250, HP 2392
  - Wavelink®
  - MCL
  - MCC
  - PTX Connect
  - Vocollect VoiceClient® 1.3
- \*O/S Dependent



### Barcode Applications

- 1D Laser Scanner Option
- 1D Imager Option
- 2D Imager Option

### Programming Environment

- HTML, XML
- Mobile Devices SDK
- HTML, XML
- Java™
- Visual Studio® 2008
- Standard protocol APIs - Windows® sockets



### User Interface

- Multicolour LED for scanning and charging

### Display (Backlit)

- 2.7" QVGA portrait mode
- QWERTY virtual option
- Sunlight readable transmissive with touch screen
- Colour 240 x 320 graphic TFT
- Passive stylus or finger operation
- Ergonomic tilted display

### Audio

- Built-in microphone and receiver on all "WiFi" variants
- 85 db internal beeper
- Bluetooth® (on equipped models)



### Keypad (Backlit)

- 48 key Alpha Numeric
- 26 large key Numeric
- LED backlit keypad
- Ergonomically enhanced for ambidextrous one-hand operation

### Expansion Slots

- One MicroSD slot

### Expansion Port

- Battery Power
- USB signaling



### Docking Port

- RS232
- USB
- DC Input

### Power Management

- 3.7V @ 3300 mAh Li-ion rechargeable battery
- 10 hour battery operation (5 scans, transmit & receive/min)
- Built in gas gauge & performance monitor
- System backup (10 minutes) during battery swap
- 3 day real time clock backup
- Adjustable battery allocation between system backup and runtime

### Physical Dimensions & Weight

- Device: 168 mm x 64 mm x 34 mm (6.6" x 2.5" x 1.3")
- Grip Area: 56 mm / 2.2" (W)
- Weight with battery: 275 g (0.6 lb)

### Regulatory Approvals

- FCC 15.247
- IC RSS210
- CE ETSI EN 300 328, ETSI EN 301 489, EN 55022, EN55024
- Safety IEC 60950-1
- Laser Safety IEC 60825-1

### User Environment

- Operating Temperature: -10°C to +50°C (14°F to 122°F)
- Storage Temperature: -20°C to +60°C (-4°F to 140°F)
- Relative Humidity: 5% to 95% RH non-condensing
- Rain & Dust Protection: IP54, IEC 529
- Drop: 1.2 m (4 ft) - 26 drops to polished concrete
- Shock and Vibe: Random vibration 1 m<sup>2</sup>/s<sup>3</sup> @ 5 to 200 Hz, 0.5 m<sup>2</sup>/s<sup>3</sup> @ 200-500 with duration of 100 min/axes, 3 axes, and shock of 150 m/s<sup>2</sup> @11ms and 300 m/s<sup>2</sup> @ 6ms
- ESD: +/- 8k Vdc air discharge, +/- 4k Vdc contacts

A complete list of accessories is available at: [www.pSION.com](http://www.pSION.com)



Product is ROHS Compliant.

\* Note this product will carry the CE Mark.  
\* Specifications are subject to change without notice.



For more information, please visit [www.pSION.com](http://www.pSION.com)

© PSION Inc., PSION, PSION Teklogix, Ikon, NEO, Omnii and WORKABOUT PRO 3 are registered trademarks or trademarks of PSION PLC and subsidiaries. Other products mentioned in this document may be trademarks of PSION Inc. or trademarks or registered trademarks of other software, hardware or service providers and are used herein for identification purposes only. Windows and the Windows logo are trademarks or registered trademarks of Microsoft Corporation in the United States and/or other countries. A40111



# Legacy Technology Services

Talk to an expert, call

**866-271-9891**

[www.LegacyGlobal.com](http://www.LegacyGlobal.com)

## About us

- Legacy Technology Services is a leading nationwide provider of mobile computers, barcode scanners, printers and point of sale equipment and services.
- For over a decade, thousands of clients across North America have trusted us to provide equipment from leading manufacturers backed by the services to support them.

## Latest Hardware from top manufacturers

- Legacy handles virtually every major manufacturer of mobile computing, barcoding and point of sale equipment.

## Expert Repair and Maintenance services

- Legacy is one of the largest repair facilities in North America and is an Authorized Repair Center for many manufacturers.

## Discontinued product sourcing

- They don't make if anymore? Our inventory also includes manufacturer close-outs and discontinued equipment to support our clients legacy infrastructure.

## Trade-in and Disposal services

- That old equipment laying around your facility may still have some value. Legacy routinely purchases equipment from our clients around the globe.
  - Data destruction
  - Hardware disposal
  - Auditing services

## Dedicated client account team

- Dedicated, highly trained account managers are here to answer all your questions and provide top notch service.

## Equipment rental services

- Sometimes renting is a better solution, Legacy's huge rental inventory provides the equipment you need for temporary needs and projects.

## Some brands and partners



MOTOROLA

**Intermec**

**DATALOGIC™**

**Honeywell**

**EQUINOX**  
PAYMENTS



Legacy, Inc.,  
56 Chancellor Drive,  
Roselle, IL 60172

630-622-2001  
Toll Free: 866-271-9891  
Fax: 630-622-2044

